



Drum-Dryer series

The Drum-Dryer is a modular roll-to-roll drying unit developed for the combination with the Porta-Wash washing units and the Porta-Pad coating unit.

The Drum-Dryer is equipped with electrically heated, aluminium drums, guaranteeing an even temperature in the full width of the drum. Drying temperatures are adjustable between 20 and 160°C. The fabric in the Drum-Dryer touches the drums one-sided only, so undesirable ironing effects are avoided.

The maintenance-free chains drive all drums and rollers thus a tensionless fabric transport is guaranteed. In addition to that a fabric bar can be attached to the chain which greatly simplifies the feed-in handling of cloth into the Drum-Dryer.

The Drum-Dryer series consists of a basic module with one drum and can also, at a later stage, simply be enlarged to a maximum of 4 drums within the same machine configuration. This modularity enables a flexible configuration.

The infeed and outfeed of the Drum-Dryer can optionally be equipped with a scroll roller to unroll e.g. knitwear before drying. Additional scroll rollers before each of the 4 drums is an option.

All modules required for the proper functioning of the Drum-Dryer are integrated in the device. The closed drying chamber is equipped with an exhaust fan to remove vapour, thereby keeping the working environment clean and dry.

The Drum-Dryer in combination with the Porta-Wash washing units gives a complete and modular line for washing and drying of digitally printed textile substrates. In combination with the Porta-Pad it gives a complete and modular line for coating, finishing and drying.

The roll infeed and discharge frames units are modular units and can be selected from roll-to-roll, lorry to lorry, batch winder or a combination of these. The optional ascending batch winder for higher roll capacity is offered with an automatic transverse substrate correction and cloth-side detection for perfect straight rolls.

The Drum Dryer series is available in a 1.85, 2.50 and 3.40 meter width and is made of 304 and 316 stainless steel and teflon taped aluminium drums.

The Drum-Dryer is **CE** marked.

A DD-2500 in combination with a Porta-Pad-2500 as pre-treatment unit



- compact modular roll-to-roll dryer
- no leaders for feed-in / feed-out
- efficient heat transfer by electrically heated, aluminium drums
- one-sided contact drying
- for all types of textile cloth
- easy to operate
- easy to maintain
- free configuration, from 1 to 4 drums
- available in 1.85, 2.50 and 3.40 meter width
- stainless steel 304 and 316

options:

- ascending batch winder
- transverse substrate correction with cloth side detection
- scroll rollers for e.g. knitwear
- infeed / discharge frame for working from / to lorry
- custom power / frequency



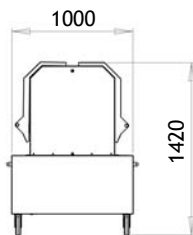
Drum-Dryer series technical specifications

Type, capacity		DD1	DD2	DD3	DD4	
Fabric length inside Drum Dryer		2.6	3.2	3.8	4.4	[m]
Evaporation capacity		4-7.5	8-15	12-22	16-30	[kg/h]
Maximum drying capacity	36 g/m ² wet pick-up	60	120	180	240	[m/h]
	72 g/m ² wet pick-up	30	60	90	120	[m/h]
Temperature range	Drum temperature	20 - 160				[°C]

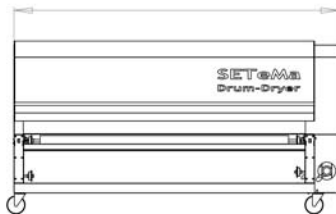
Type, width		1850	2500	3400	
Fabric	maximum width	1.85	2.50	3.40	[m]
Fabric roll	maximum weight				60 [kg]
	maximum diameter				0.55 [m]
Exhaust fan	flow	150 - 600			[m ³]

Type, weights		DD1	DD2	DD3	DD4	
	DD-1850	500	550	600	650	[kg]
	DD-2500	570	630	690	750	[kg]
	DD-3400	675	750	825	900	[kg]

Required Connections		DD1	DD2	DD3	DD4	
	power voltage	N + 3 x 230/400				[VAC]
	power current	16	32	50	63	[A]
	Drum heater, power	6-9	12-18	18-27	24-36	[kW]



DD-1850: 2680
DD-2500: 3330
DD-3400: 4230



SETeMa B.V.

Kerkstraat 32, 5843 AP Westerbeek, NL
Phone : +31 485 385764
Fax : +31 485 385751
e-mail : info@setema.com
web : www.setema.com

Marketing & Sales:

2-some

Merel 11, 5831 MS Boxmeer, NL
Phone : +31 (0) 485 520322
Fax : +31 (0) 485 520322
E-mail : mail@2-some.com
web : www.2-some.com